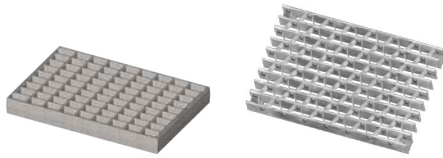


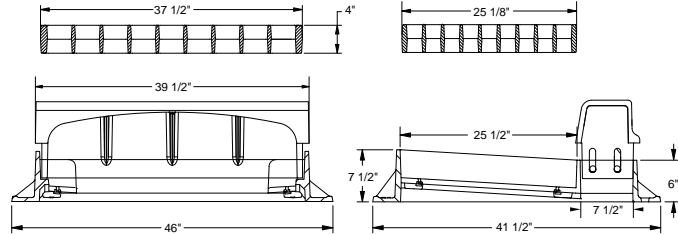
### 7150 CATCH BASIN CURB INLET

Heavy duty  
 With M1 ductile iron grate and  
 Type T1 unmountable back  
 Curb back height adjusts 6" to 10"  
 7150Z1 frame with 7 1/2" height front  
 and 6" height back  
 NY State DOT — Type F2, G2, CU2 & CM2

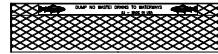


**Type M1 Grate (G2)**  
 Approx. 558 sq. in.  
 open area

**Galvanized Steel  
 Reticuline Grate (G2)**



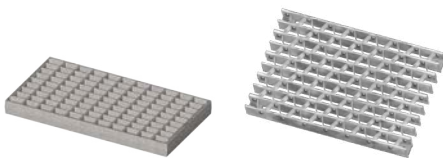
**Type T1 Back**  
 Unmountable back (CU2)  
 with "DUMP NO  
 WASTE!" lettering and  
 fish image



**Type T2 Back**  
 Mountable back (CM2)

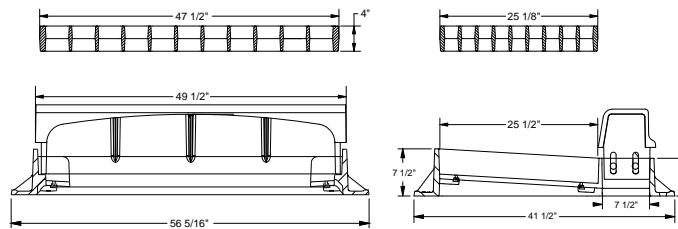
### 7155 CATCH BASIN CURB INLET

Heavy duty  
 With M1 ductile iron grate and  
 Type T1 unmountable back (CU3)  
 Curb back height adjusts 6" to 10"  
 NY State DOT — Type F3, G3, CU3 & CM3  
 Parallel bar grate

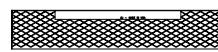


**Type M1 Grate (G3)**  
 Approx. 724 sq. in.  
 open area

**Galvanized Steel  
 Reticuline Grate (G3)**



**Type T1 Back**  
 Unmountable back (CU3)  
 with "DUMP NO  
 WASTE!" lettering and  
 fish image



**Type T2 Back**  
 Mountable back (CM3)